



THE HARVEST GODDESS THRIVES

NET AUGUST 5 2025



Press Kit

rocketlabcorp.com



LAUNCH INFORMATION



MISSION

Rocket Lab will launch a dedicated mission for Institute for Q-shu Pioneers of Space, Inc. (iQPS), a Japan-based Earth imaging company.



LAUNCH SITE

Launch Complex 1 – Pad B
Mahia, New Zealand.



LAUNCH WINDOW

The launch window opens from August 5, 2025 for two weeks. Back up opportunities are available throughout August should the launch date change for any reason.

Time Zone	Window Open
UTC	03:45
NZT	3:45 PM
JST	12:45 PM
EST	11:45 PM
PST	8:45 PM



ORBIT

575 km

Circular Earth orbit



SATELLITES

1

QPS-SAR-12



INCLINATION

42

Degrees



CUSTOMER

iQPS

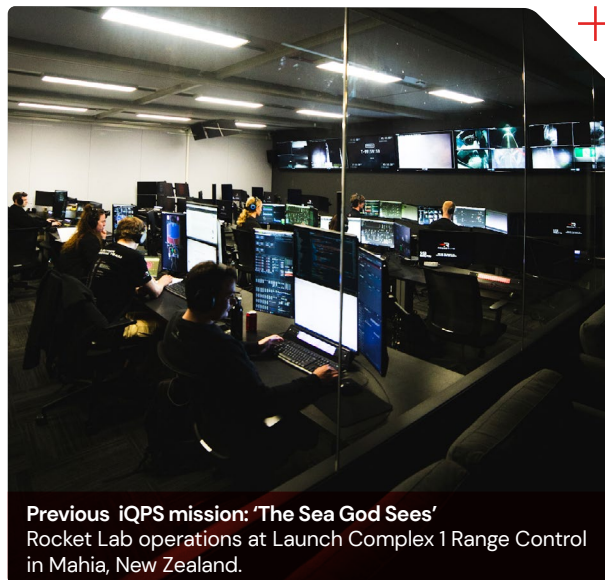
MISSION OVERVIEW

About 'The Harvest Goddess Thrives'

'The Harvest Goddess Thrives' is scheduled to launch from Rocket Lab Launch Complex 1 for Japan-based Earth imaging company, Institute for Q-shu Pioneers of Space, Inc. (iQPS).



'The Harvest Goddess Thrives' is the fifth overall Electron launch for iQPS and the fourth of eight missions contracted to launch for them across 2025 and 2026 to build out their constellation. With this mission, Electron will have deployed more than half of the iQPS constellation. Each mission will utilize a Rocket Lab Motorized Lightband; separation systems for the satellite to attach to and deploy from Electron once in space.



Rocket Lab will deploy a single synthetic aperture radar (SAR) satellite called KUSHINADA-I to a 575km circular Earth orbit, where it will join iQPS's growing Earth-imaging constellation. This includes their QPS-SAR-5 satellite named "TSUKUYOMI-I" deployed in 2023, QPS-SAR-9 or "SUSANOO-I" deployed in March 2025, QPS-SAR-10 or "WADATSUMI-I" deployed in May 2025, and QPS-SAR-11 or YAMATSUMI-I deployed in June 2025 – all by Rocket Lab.



IQPS MISSIONS OVERVIEW

This mission is the fifth launch for iQPS since 2023. With this mission, Electron will have successfully launched more than half of iQPS's satellite constellation currently in orbit.

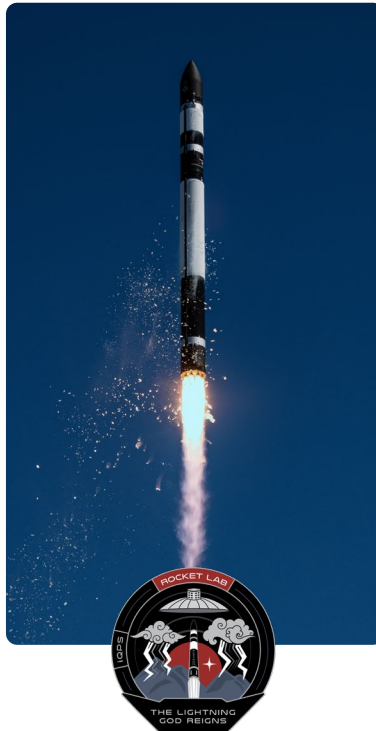
'The Moon God Awakens'

TSUKUYOMI-I
LAUNCHED: 15 DECEMBER 2023



'The Lightning God Reigns'

SUSANOO-I
LAUNCHED: 15 MARCH 2025



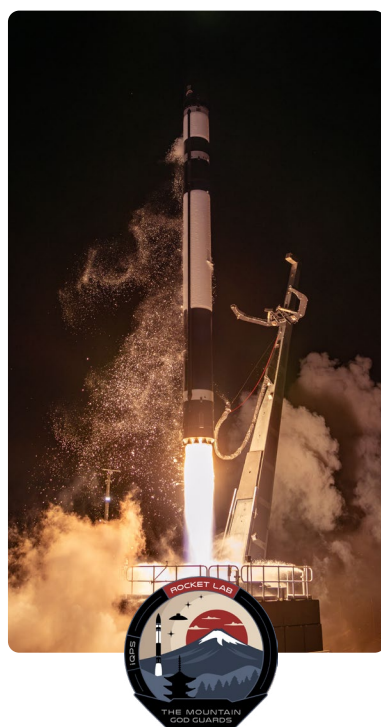
'The Sea God Sees'

WADATSUMI-I
LAUNCHED: 17 MAY 2025



'The Mountain God Guards'

YAMATSUMI-I
LAUNCHED: 19 JUNE 2025



'The Harvest Goddess Thrives'

KUSHINADA-I
LAUNCHING: 5 AUGUST 2025



IQPS OVERVIEW

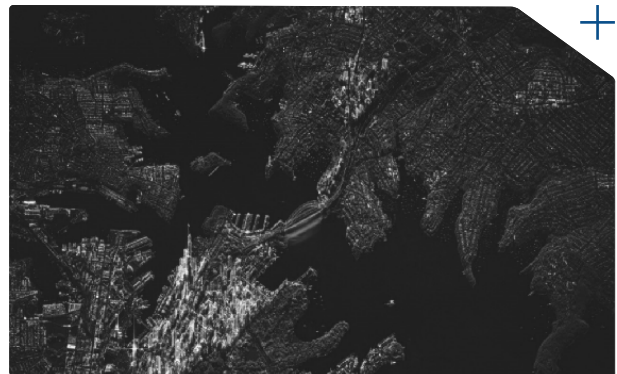


About iQPS

Institute for Q-shu Pioneers of Space, Inc. (iQPS) is a pioneering space startup founded in 2005 by two Emeritus Professors from Kyushu University and a rocket developer with the mission of establishing a space industry in Japan's Kyushu region.

Building on more than 20 years of small satellite development expertise at Kyushu University, iQPS now brings together a dynamic team of young engineers, industry leaders, and visionary professors emeritus. The company's growth is further strengthened by the support of over 25 partner companies throughout Japan, primarily based in northern Kyushu.

QPS-SAR is an advanced small SAR satellite developed by iQPS. The company has engineered a patented large deployable antenna that is both lightweight and highly compact, enabling the satellite to emit strong radio waves. This breakthrough led to the successful development of QPS-SAR, a high-resolution small SAR satellite that is just 1/20th the weight and 1/100th the cost of traditional SAR satellites.



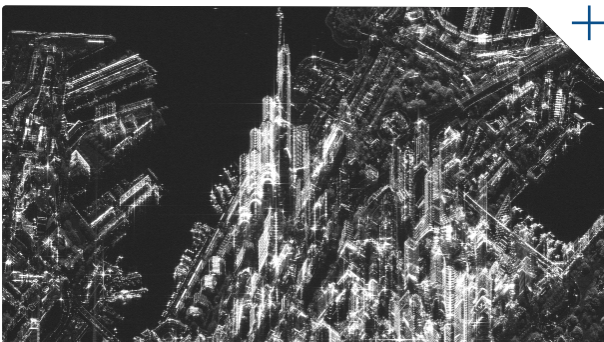
Sydney City

Images captured from QPS-SAR-5



Sydney Harbour Bridge

Images captured from QPS-SAR-5



Sydney Central

Images captured from QPS-SAR-5

To date, eleven QPS-SAR satellites have been launched and iQPS aims to establish a constellation of 36 satellites. This will enable the delivery of a "Near-Real-Time Data Provisioning Service," allowing for the observation of specific regions worldwide at an average interval of 10 minutes. This will make it possible to collect continuous images as data, and to accumulate data not only on "Stationary Objects" such as land and buildings, but also on "Moving Objects" such as vehicles, ships, and cattle and livestock.

The data gathered by QPS-SAR constellation has the potential to revolutionize industries and reshape the future. By leveraging insights from moving object data, iQPS can unlock new economic value, enhance urban safety and security, and provide predictive analytics for agriculture, national economies, and regional markets when integrated with weather, market, and economic data. The possibilities are limitless. QPS-SAR also enables swift situational awareness in emergencies. With multiple satellites in orbit, capable of penetrating clouds and plumes, it provides 24/7 monitoring, ensuring rapid assessment and effective countermeasure planning—regardless of weather conditions.

MISSION PATCH ANATOMY

'The Harvest Goddess Thrives'

'The Harvest Goddess Thrives' mission name draws inspiration from the Japanese goddess of prosperity and agriculture, KUSHINADA. The 'I' in the satellite name KUSHINADA-I signifies IQPS's first entry into a new orbit for its constellation. Japan has long cherished nature, and this goddess is often to thank for a bountiful harvest. KUSHINADA-I will soon join its fellow gods, YAMATSUMI-I, the mountain god, TSUKUYOMI-I, the moon god, SUSANOO-I, the lightning god, and WADATSUMI-I, the sea god, in space.



Mission merchandise can be found on the Rocket Lab merchandise store after launch day.

rocketlabcorp.com/shop

LAUNCH SITE OVERVIEW

Rocket Lab Launch Complex-1 Mahia, New Zealand



'The Harvest Goddess Thrives' will lift off from Launch Complex 1 on New Zealand's Mahia Peninsula.

An FAA-licensed spaceport, Launch Complex 1 can provide up to 120 launch opportunities every year. From the site it is possible to reach orbital inclinations from sun-synchronous through to 30 degrees, enabling a wide spectrum of inclinations to service the majority of the satellite industry's missions to low Earth orbit.



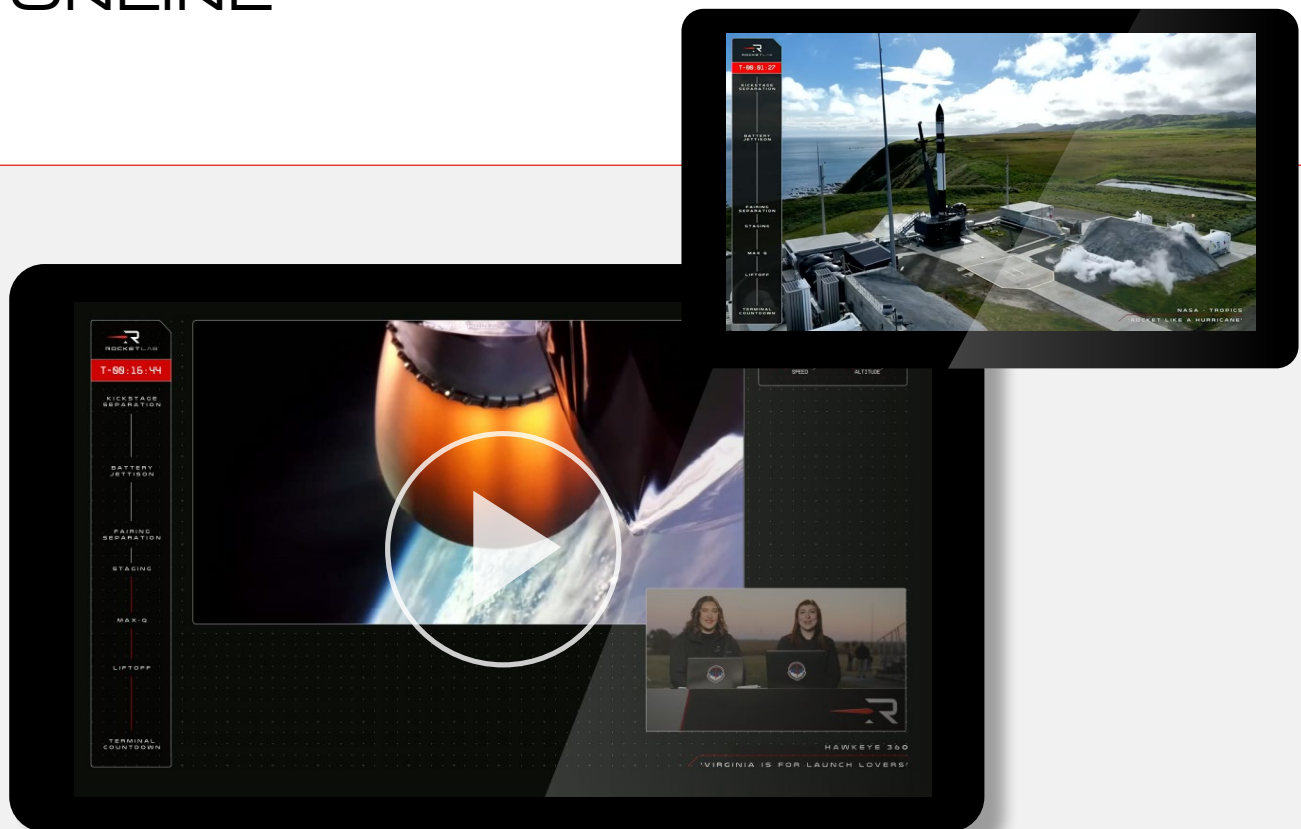
Located within Launch Complex 1 are Rocket Lab's private range control facilities, two 100K satellite cleanrooms, a launch vehicle assembly facility which can process multiple Electrons at once, and administrative offices.

Operating a private orbital launch site alongside its own range and mission control centres allows Rocket Lab to reduce the overhead costs per mission, resulting in a cost-effective launch service for satellite operators.

In addition to Launch Complex 1, Rocket Lab operates an additional launch site, Launch Complex 2, at the Mid-Atlantic Regional Spaceport within NASA's Wallops Flight Facility on Virginia's Eastern Shore. Launch Complex 2 can support up to 12 missions per year.

By operating two launch complexes in two hemispheres, Rocket Lab provides customers with flexible, responsive launch opportunities.

VIEWING A LAUNCH ONLINE



LIVE STREAM

The live stream is viewable at:

[rocketlabcorp.com/
live-stream](https://rocketlabcorp.com/live-stream)

LAUNCH FOOTAGE & IMAGES

Images and footage of 'The Harvest Goddess Thrives' launch will be available shortly after a successful mission at:

www.flickr.com/photos/rocketlab

UPDATES

For information on launch day visit:

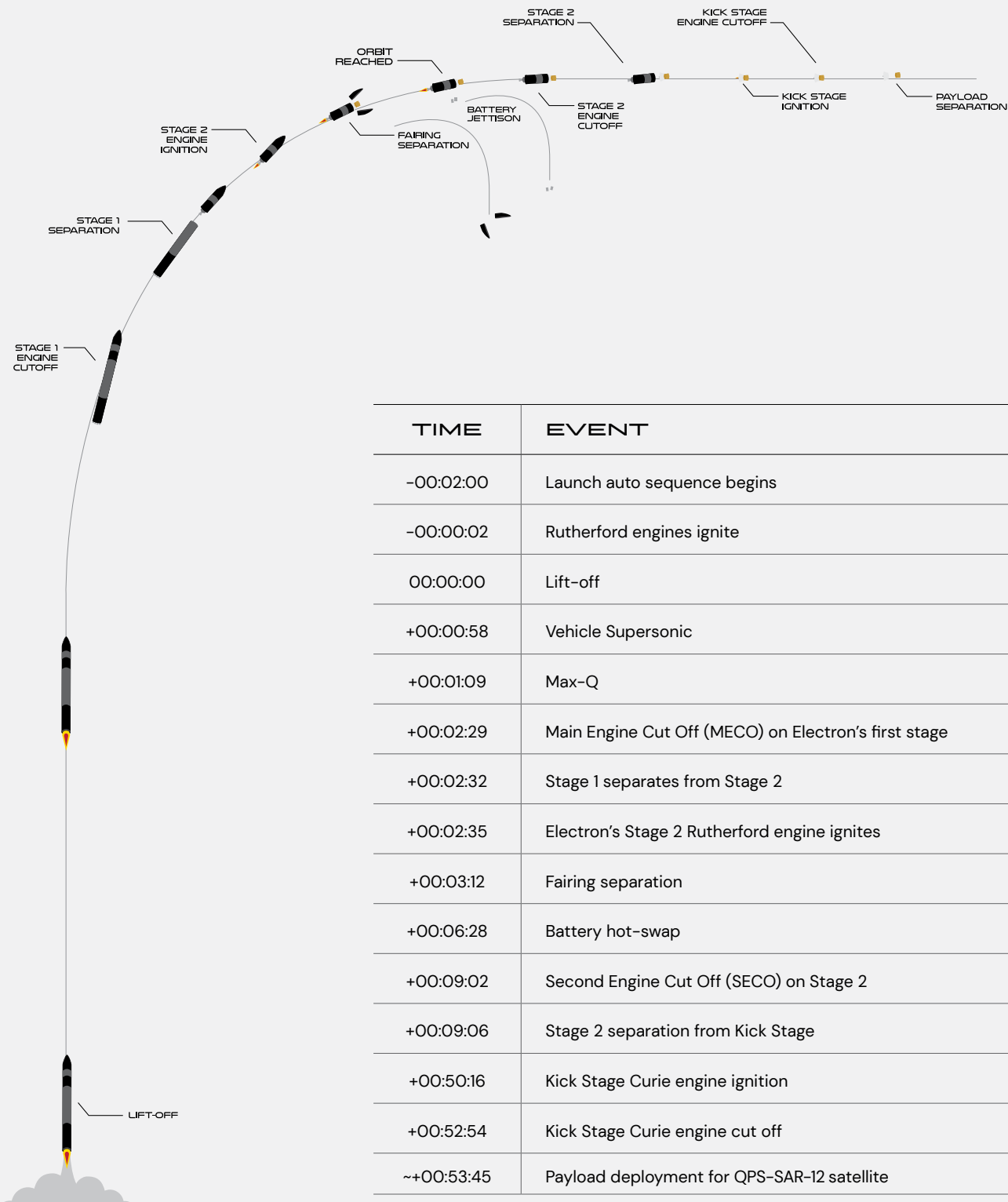
rocketlabcorp.com/next-mission

FOLLOW ROCKET LAB:

[!\[\]\(9c2e8d1b5bd77cb5c9f83b7a9cff79fd_img.jpg\) @RocketLab](https://twitter.com/RocketLab)

[!\[\]\(e3275251d0893157c3584e20c81dc3ba_img.jpg\) facebook.com/RocketLabCorp](https://facebook.com/RocketLabCorp)

TIMELINE OF LAUNCH EVENTS



ELECTRON LAUNCH VEHICLE

OVERALL

LENGTH

18m

DIAMETER (MAX)

1.2m

STAGES

2 + Kick Stage

VEHICLE MASS (LIFT-OFF)

13,000kg

MATERIAL/STRUCTURE

Carbon Fiber Composite/Monocoque

PROPELLANT

LOX/Kerosene

PAYLOAD

NOMINAL PAYLOAD

320kg / 440lbm To 500km

FAIRING DIAMETER

1.2m

FAIRING HEIGHT

2.5m

FAIRING SEP SYSTEM

Pneumatic Unlocking, Springs

STAGE 2

PROPULSION

1x Rutherford Vacuum Engine

THRUST

5800 LBF Vacuum

ISP

343 Sec

INTERSTAGE

SEPARATION SYSTEM

Pneumatic Pusher

STAGE 1

PROPULSION

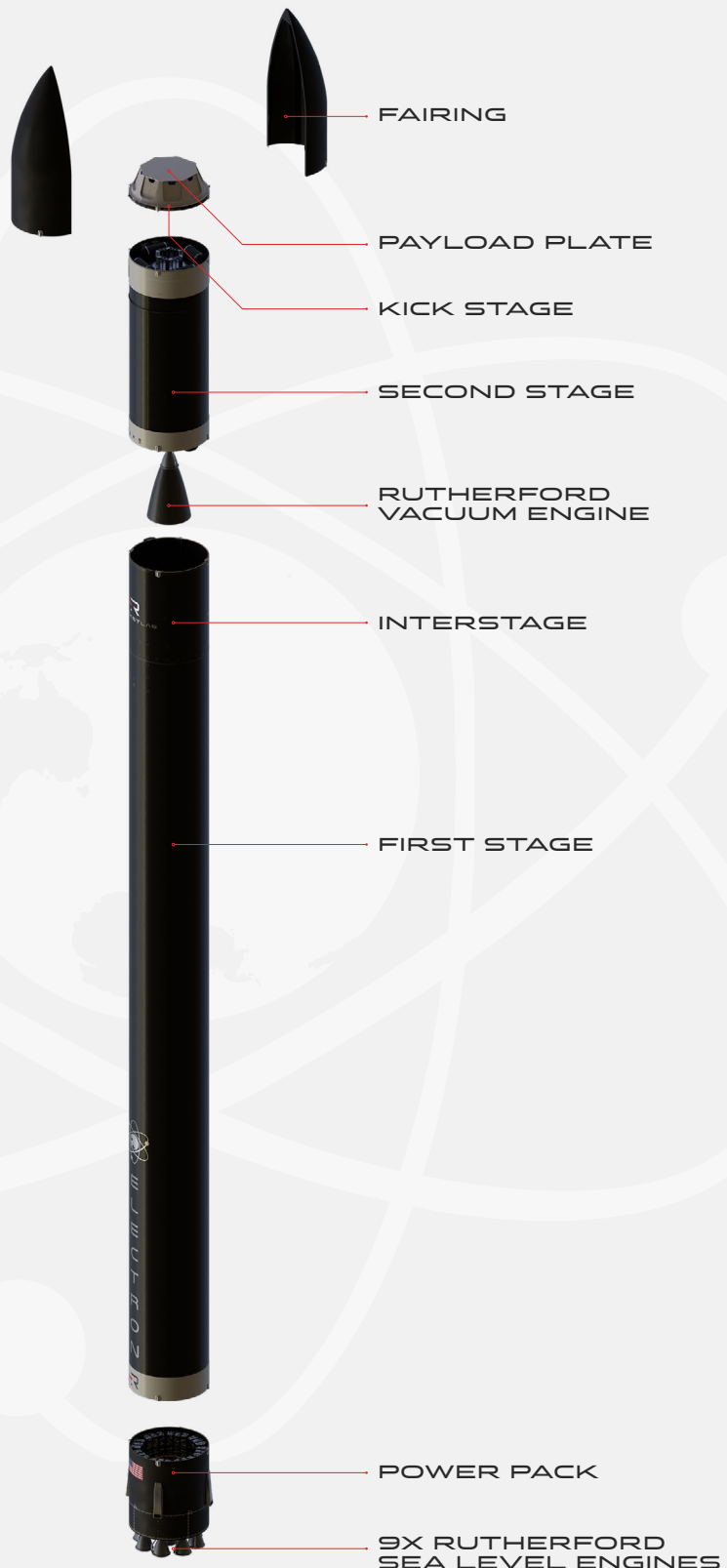
9x Rutherford Sea Level Engines

THRUST


5600 LBF Sea Level (Per Engine)


ISP

311 Sec





CONTACT US


 rocketlabcorp.com

 media@rocketlabusa.com

CONNECT WITH US

 [@rocketlab](https://twitter.com/rocketlab)

 [rocketlabcorp](https://www.instagram.com/rocketlabcorp)

 facebook.com/rocketlabcorp

